
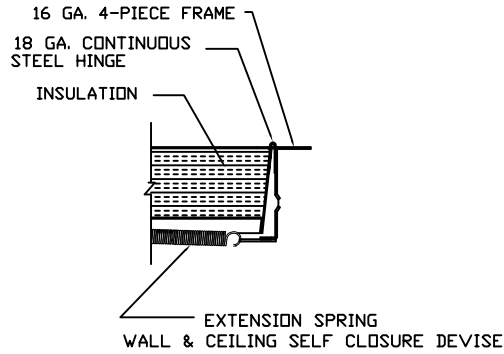
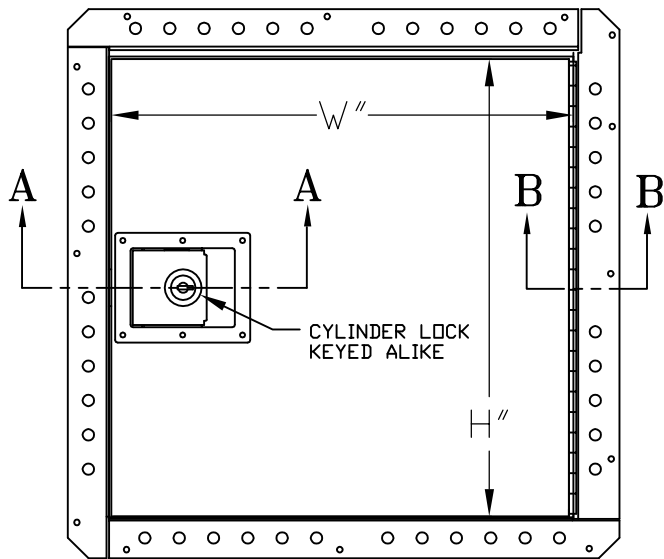




Toll Free Phone: 1-800-609-2917 / Toll Free Fax: 1-888-828-6021 / Email: info@accessdoorsandpanels.com / www.accessdoorsandpanels.com

LEED for NEW CONSTRUCTION Version 2.2									Milcor Galv Steel Roof Hatches	Milcor Alum Roof Hatches	Milcor Skylight Hatches	Milcor Galv Stl Heat & Smoke Vents	Milcor Alum Heat & Smoke Vents	Milcor Domed Heat & Smoke Vents	Milcor Translucent Panel Heat & Smoke Vents	Milcor Steel Sidewalk Doors	Milcor Alum Sidewalk Doors	Milcor Steel Floor Doors	Milcor Alum Floor Doors	Milcor Steel Access Doors
SS	WE	EA	MR	EQ	ID	Heat Island Effect, Roof		X		X	X		X	X						
Credit 7.2																				
SS	WE	EA	MR	EQ	ID	Recycled Content, 10% (post-consumer + 1/2 pre-consumer)		X	X	X	X	X	X	X	X	X	X	X	X	
Credit 4.1																				
SS	WE	EA	MR	EQ	ID	Recycled Content, 20% (post-consumer + 1/2 pre-consumer)		X	X	X	X	X	X	X	X	X	X	X	X	
Credit 4.2																				
SS	WE	EA	MR	EQ	ID	Regional Materials, 10% Extracted, Processed & Manufactured		X	X	X	X	X	X	X	X	X	X	X	X	
Credit 5.1																				
SS	WE	EA	MR	EQ	ID	Regional Materials, 20% Extracted, Processed & Manufactured		X	X	X	X	X	X	X	X	X	X	X	X	
Credit 5.2																				
SS	WE	EA	MR	EQ	ID	Low-Emitting Materials, Adhesives & Sealants		X	X	X	X	X	X	X	X	X	X	X	X	
Credit 4.1																				
SS	WE	EA	MR	EQ	ID	Low-Emitting Materials, Paints & Coatings		X		X	X		X	X	X	X	X	X	X	
Credit 4.2																				



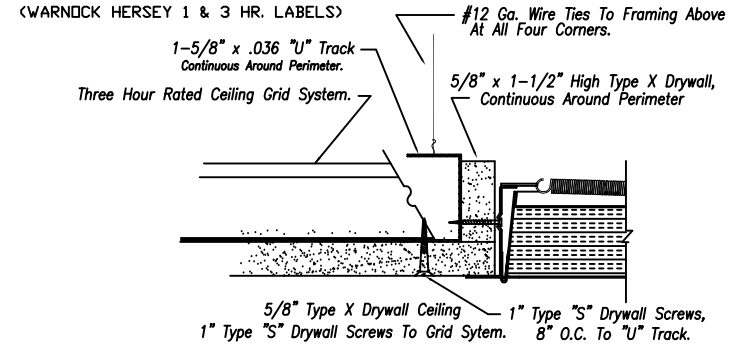
SECTION B - B

STANDARD SIZES and PRODUCT NUMBERS

DOOR SIZE	FRAMED OPENING	PRODUCT NUMBER	No. PADDLE LATCHES	MASONRY ANCHORS
8 X 8	8-1/2 X 8-1/2	3217-010-9	1	4
12 X 12	12-1/2 X 12-1/2	3217-012-9	1	4
12 X 24	12-1/2 X 24-1/2	3217-012-9	1	4
14 X 14	14-1/2 X 14-1/2	3217-014-9	1	4
16 X 16	16-1/2 X 16-1/2	3217-016-9	1	4
18 X 18	18-1/2 X 18-1/2	3217-018-9	1	4
22 X 30	22-1/2 X 30-1/2	3217-022-9	1	4
22 X 36	22-1/2 X 36-1/2	3217-027-9	1	4
24 X 24	24-1/2 X 24-1/2	3217-024-9	1	4
24 X 30	24-1/2 X 30-1/2	3217-023-9	1	4
24 X 36	24-1/2 X 36-1/2	3217-028-9	1	4
24 X 48	24-1/2 X 48-1/2	3217-031-9	2	6
30 X 30	30-1/2 X 30-1/2	3217-030-9	1	4
32 X 32	32-1/2 X 32-1/2	3217-032-9	1	4
36 X 36	36-1/2 X 36-1/2	3217-036-9	1	4
36 X 48	36-1/2 X 48-1/2	3217-038-9	2	6
48 X 48	48-1/2 X 48-1/2	3217-048-9	2	8

◆ - INTENDED FOR VERTICAL (WALL) APPLICATION ONLY
NOTE: STAINLESS STEEL FIRE-RATED DOORS ARE AVAILABLE IN A MAXIMUM DIMENSION OF 36"

Three Hour Rated Non-combustible Floor/Ceiling Installation.



THESE DOORS HAVE BEEN TESTED AND PASSED THE UL10B 1-1/2 HOUR TEST AND WARNOCK HERSEY 1 & 3 HOUR TESTS. THEY CARRY BOTH THE UL10B & WARNOCK LABELS. ANY CHANGES REQUIRE THEIR APPROVAL OR NO LABELS CAN BE ADDED.

* POWDER COATED GRAY

THIS DRAWING IS THE PROPERTY OF COMMERCIAL PRODUCTS GROUP AND CONTAINS PROPRIETARY INFORMATION. NOT TO BE REPRODUCED OR REDISTRIBUTED WITHOUT CPG'S WRITTEN PRIOR CONSENT.

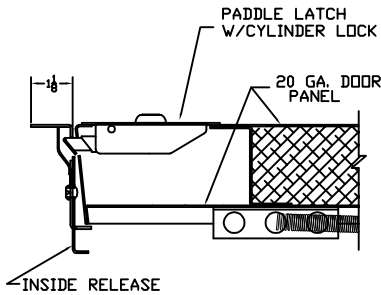


Toll Free Phone: 1-800-609-2917
Toll Free Fax: 1-888-828-6021
Email: info@accessdoorsandpanels.com
www.accessdoorsandpanels.com

**UFR-DW ACCESS DOOR
UNIVERSAL FIRED RATED DOOR
FOR DRYWALL**

MATERIAL SCHEDULE

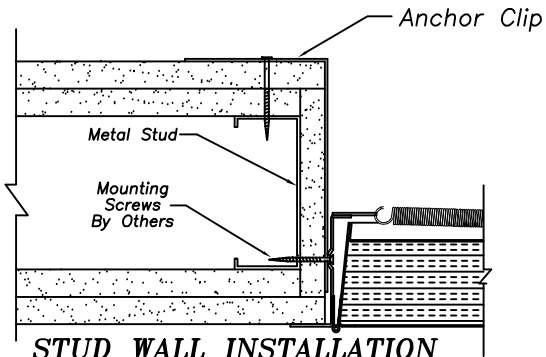
PART NO.	SIZE	COVER	FRAME
SUBMITTAL	W" X H"	20 GA.	16 GA.
DATE	12/14/16	DRAWN JM	
REV		JOB NO.	
		SHEET 1 of 1	



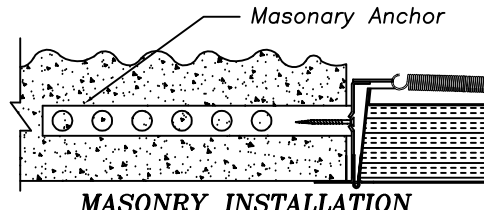
SECTION A - A

VERIFICATION AND APPROVAL OF GENERAL ARRANGEMENT AND OVERALL DIMENSIONS OF THIS DOCUMENT ARE REQUIRED BEFORE THE ORDER IS ENTERED FOR MANUFACTURING.

APPROVAL SIGNATURE _____
TITLE HELD _____ DATE OF APPROVAL _____



STUD WALL INSTALLATION
U.L. 1-1/2 HR (B) LABEL



MASONRY INSTALLATION
U.L. 1-1/2 HR (B) LABEL